



1135 BETHEL STREET
HONOLULU, HAWAII 96813
1.808.528.5535
WWW.HAWAII THEATRE.COM

REPERTORY LIGHT PLOT

LX-1

THEATRE FIXTURE INVENTORY

- 28) STRAND LEKO 5° (10X23)
- 16) STRAND LEKO 10° (8X23)
- 17) STRAND LEKO 15° (6X22)
- 24) STRAND LEKO 20° (6X16)
- 54) STRAND LEKO 30° (6X12)
- 44) STRAND LEKO 40° (6X9)
- 34) STRAND 6" FRESNEL
- 24) STRAND 8" FRESNEL
- 11) STRAND PAR 64 1000W
- 9) STRAND PAR 64 500W w/ Twist Con.
- 3) ALTMAN 1000W SCOOP
- 16) CHROMA Q COLOR FORCE 72
- 2) COLOR KINETICS COLOR BLAZE 72
- 2) COLOR KINETICS COLOR BLAZE 48
- 10) CHAUVET COLORADO 3P
- 6) MARTIN MAC 700 PROFILE

THEATRE CONTROL INVENTORY

- 1) ETC SMARTFADE 24/48
- 1) ETC EXPRESS 72/144
- 1) MARTIN M1 w/ 17" Touch Screen
- 2) Universe Installed

GENERAL NOTES

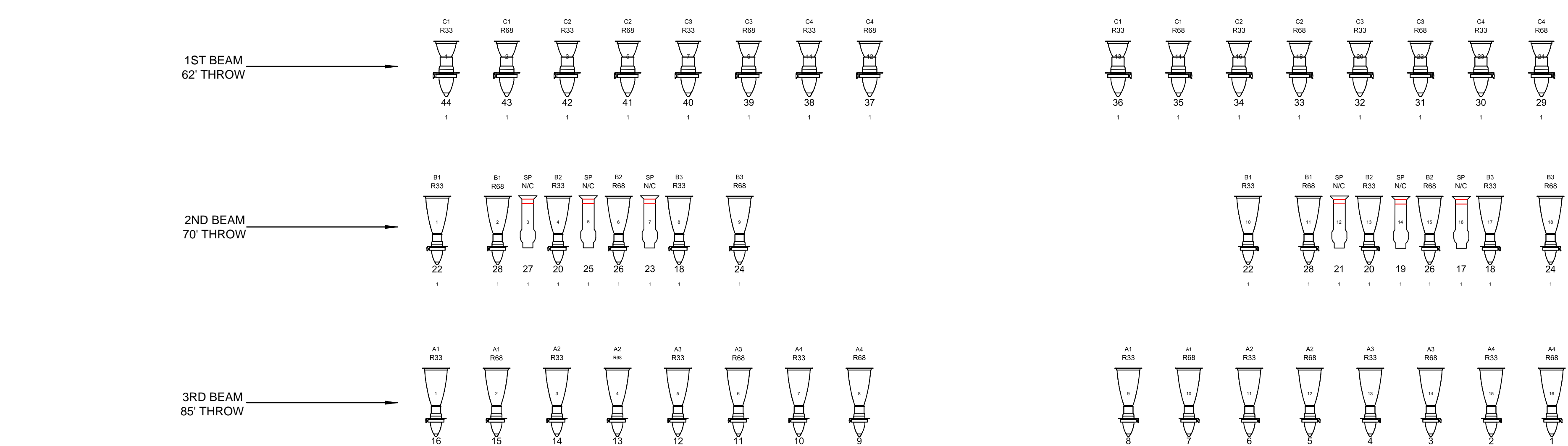
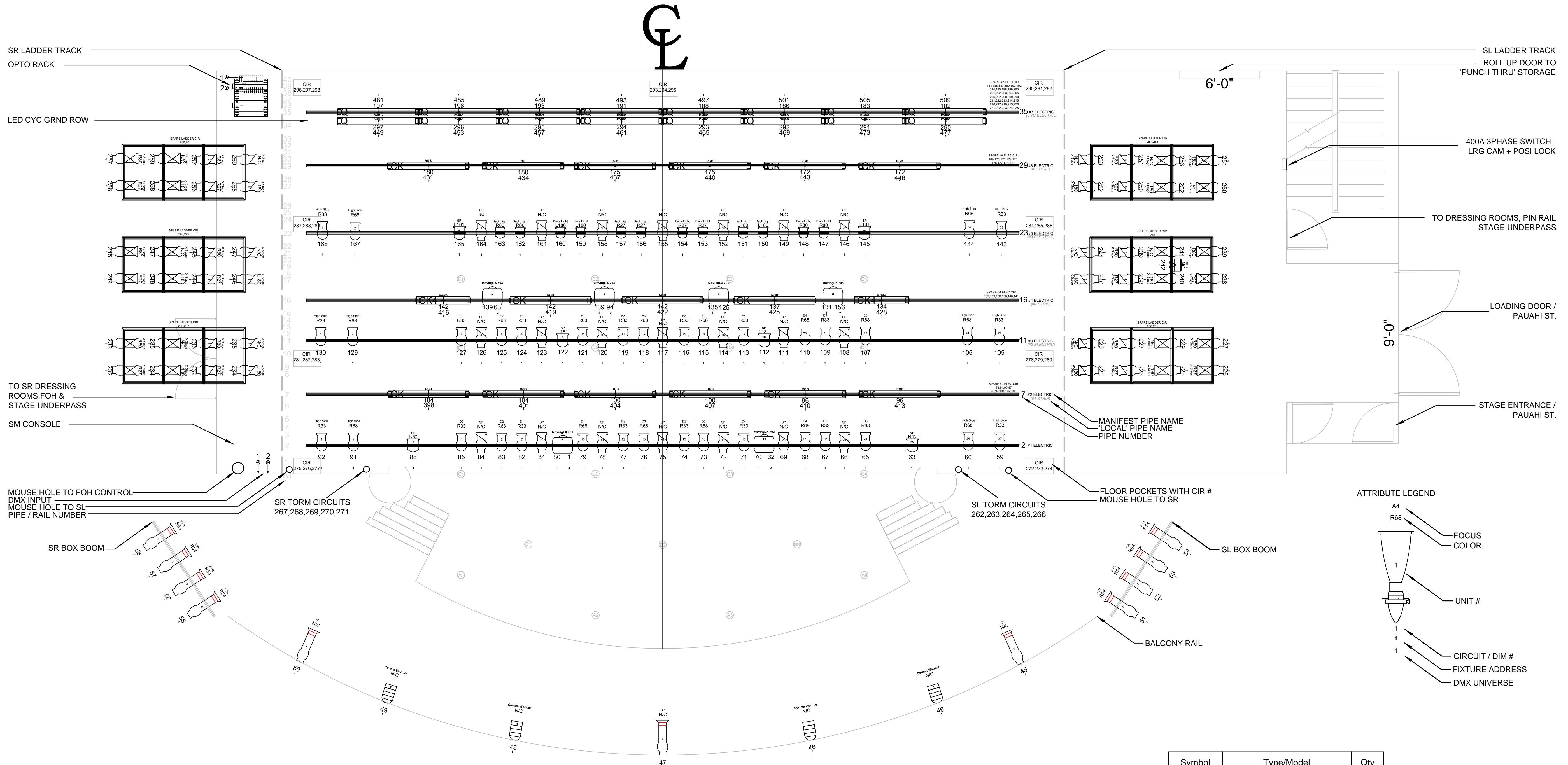
1. System Installed to Meet or Exceed NEC
2. All Fixtures UL/ETL Listed
3. Layout of Fixtures Downstage of Proscenium NTS
4. USR Opto Rack NTS
5. Opto Splitters have 4) 3Pin and 4) 5Pin Outputs
6. Ladders Move Up and Down Stage & are Located on Noted Tracks
7. Circuits 70,80 on #1 Electric & Circuits 131,135,139 on #4 Electric are Non Dim Utilized for Moving Lights
8. Circuits 96,100,104 on #2 Electric, Circuits 134,137,142 on #4 Electric & Circuits 172, 175,180 on #6 Electric are Non Dim Utilized for Over Head Batten Wash.
9. Circuits 182,183,186,188,191,193,196 197 on #7 Electric are Non Dim Utilized for Flowm Cyc Fixtures
10. Ground Row Cyc Lights Do Not have a Dedicated Power Circuits. Typically they use Circuits 290-297.
11. Prior to Utilizing Ground Row Cyc Fixtures, Assure Circuits to be Utilized to are Set to Non Dim Setting inside Dimming Control Module
12. House has 2 Water Based Hazers, Hazer is a 2 Channel Fixture Patched at 300 in Universe 1
13. If No Fixture Address Available, use Circuit/Dimmer # to Control Fixture
14. Assure Current Fixture Count and Availability with Production Manager



WWW.PRYSMENTERPRISES.COM
Sean Agosta-Bideman, IES - Principal

| | |
|------------|-----------|
| DESIGN | SAB & BW |
| DRAWN BY | SAB |
| SCALE | 1/4" = 1' |
| SHEET SIZE | ARCH - D |
| TITLE | LX - 1 |

APRIL 2015



| Symbol | Type/Model | Qty |
|--------|------------------------------|-----|
| | Strand Leko 5° (10 x 23) | 28 |
| | Strand Leko 10° (8 x 23) | 16 |
| | Strand Leko 15° (6 x 22) | 17 |
| | Strand Leko 20° (6 x 16) | 24 |
| | Strand Leko 30° (6 x 12) | 45 |
| | Strand Leko 40° (6 x 9) | 36 |
| | Strand 8" Fresnel | 6 |
| | Strand 6" Fresnel | 12 |
| | PAR 64 MFL 1000w | 4 |
| | Altman 10" Scoop | 1 |
| | Chroma Q ColorForce 72 | 16 |
| | Color Kinetics ColorBlaze 72 | 15 |
| | Color Kinetics ColorBlaze 48 | 2 |
| | Martin Mac 700 Profile | 6 |

A HAWAII THEATRE CENTER REPERTORY LIGHT PLOT
1/4" = 1'

